

Mini Bus Snow Testing Summary

Continental Tire: Baldemar Carmona - February 23, 2010

Tire Category	Snow Braking		Lateral Cornering	
	Percentage	Meters	Percentage	Lateral Acceleration
Winter Tire	100	38.7	100	0.417
All-Season Tire	47.3	59.0	41.4	0.173
All-Season FA / Winter RA	71.6	49.6	43.5	0.181

Snow Braking - LT225/75R16

Evaluation Speed: 60km/h to 0 km/h

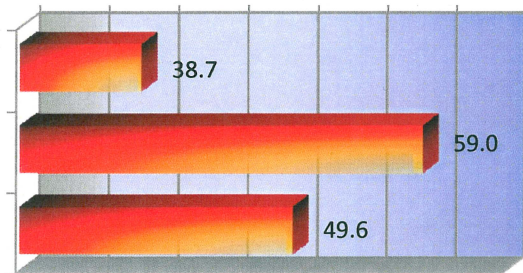
NOTES:

Ambient Temp: -2°C
Surface Temp: -9°C
Inflation: 4.5 bar

Stopping Distance in meters

30 35 40 45 50 55 60 65

Winter Tire
All-Season Tire
All-Season FA / Winter RA



Lateral Cornering - LT225/75R16

Test Speed: 30km/h

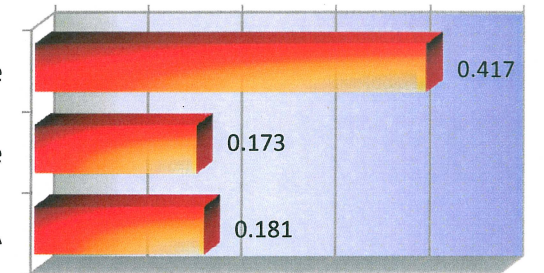
NOTES:

Ambient Temp: -2°C
Surface Temp: -9°C
Inflation: 4.5 bar

Lateral Acceleration in g

0.0 0.1 0.2 0.3 0.4 0.5

Winter Tire
All-Season Tire
All-Season FA / Winter RA



Tire Category	Traction (9%-60% Slip)	
	Percentage	Force (kgf)
Winter Tire	125.4	648
All-Season Tire	100	517
Worn All-Season	64.9	336

Snow Traction - LT225/75R16

NOTES:

Ambient Temp: -1°C
Surface Temp: -4°C
Inflation: 3.4 bar
Vehicle: Ford F-350
FA: 1760kg & RA 1262kg
+ 226kg for added weight.

Traction Force in kgf Averaged from 9%-60% Slip

300 350 400 450 500 550 600 650 700

Winter Tire
All-Season Tire
Worn All-Season

